

\$1,031,000 - 200 9622 42 Avenue, Edmonton

MLS® #E4354499

\$1,031,000

0 Bedroom, 0.00 Bathroom,
Office on 0.00 Acres

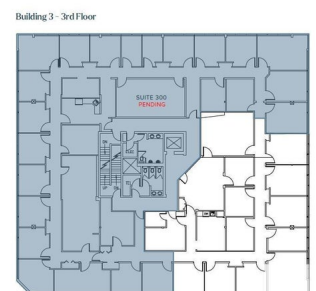
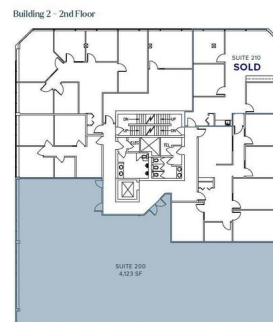
Strathcona Industrial Park, Edmonton, AB

Welcome to Whitemud Business Park! This established southside office park has recently underwent a condo conversion so units are now for sale! Sizes range from 915 Sq. Ft. up to 6,964 Sq. Ft. The park has a campus-like environment designed to enhance connectivity and collaboration. On-site amenities include a gym space exclusive to building occupants and an outdoor eating/gathering area soon to be improved. Great access to Whitemud Drive, QEII, and Anthony Henday Drive. This particular unit is 4,123 Sq. Ft. of developed office space with over 20 perimeter offices with windows, kitchen area, and meeting rooms. A summary of all current availabilities can be found on the brochure, we may also have other units coming up within the building that meet your size range.

Built in 1980

Essential Information

| | |
|------------|-------------|
| MLS® # | E4354499 |
| Price | \$1,031,000 |
| Bathrooms | 0.00 |
| Acres | 0.00 |
| Year Built | 1980 |
| Type | Office |
| Status | Active |



Community Information

| | |
|-------------|----------------------------|
| Address | 200 9622 42 Avenue |
| Area | Edmonton |
| Subdivision | Strathcona Industrial Park |
| City | Edmonton |
| County | ALBERTA |
| Province | AB |
| Postal Code | T6E 5Y7 |

Exterior

| | |
|--------------|-------|
| Exterior | Mixed |
| Construction | Mixed |

Additional Information

| | |
|----------------|-------------------|
| Date Listed | August 16th, 2023 |
| Days on Market | 594 |
| Zoning | Zone 41 |

DATA IS DEEMED RELIABLE BUT IS NOT GUARANTEED ACCURATE BY THE REALTORS® ASSOCIATION OF EDMONTON. COPYRIGHT 2025 BY THE REALTORS® ASSOCIATION OF EDMONTON. ALL RIGHTS RESERVED. Trademarks are owned or controlled by the Canadian Real Estate Association (CREA) and identify real estate professionals who are members of CREA (REALTOR®, REALTORS®) and/or the quality of services they provide (MLS®, Multiple Listing Service®)

Listing information last updated on April 1st, 2025 at 12:02pm MDT