

# \$0 - 202 16813 113 Avenue, Edmonton

MLS® #E4396075

**\$0**

0 Bedroom, 0.00 Bathroom,  
Office on 0.00 Acres

West Sheffield Industrial, Edmonton, AB

Fully Furnished 2nd floor office for lease.  
Reception area plus 5 offices, large board  
room, Kitchen plus storage areas. Location is  
accessible from 170 street making it ideal  
location for a growing business. Plenty of  
parking .

Built in 1980

## Essential Information

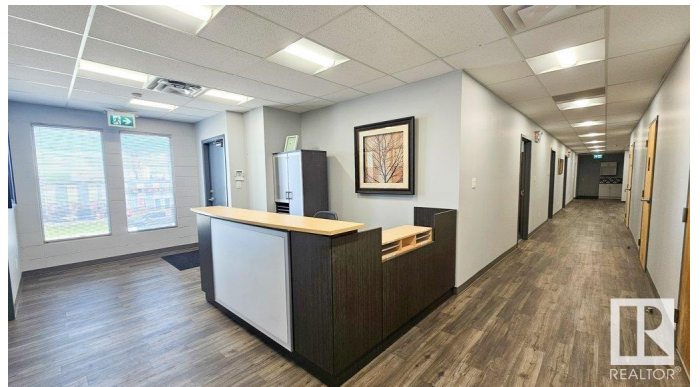
MLS® #	E4396075
Bathrooms	0.00
Acres	0.00
Year Built	1980
Type	Office
Status	Active

## Community Information

Address	202 16813 113 Avenue
Area	Edmonton
Subdivision	West Sheffield Industrial
City	Edmonton
County	ALBERTA
Province	AB
Postal Code	T5M 2X2

## Exterior

Exterior	Concrete
----------	----------



Construction      Concrete

### **Additional Information**

Date Listed      July 4th, 2024

Days on Market      272

Zoning      Zone 40

DATA IS DEEMED RELIABLE BUT IS NOT GUARANTEED ACCURATE BY THE REALTORS® ASSOCIATION OF EDMONTON. COPYRIGHT 2025 BY THE REALTORS® ASSOCIATION OF EDMONTON. ALL RIGHTS RESERVED. Trademarks are owned or controlled by the Canadian Real Estate Association (CREA) and identify real estate professionals who are members of CREA (REALTOR®, REALTORS®) and/or the quality of services they provide (MLS®, Multiple Listing Service®)

Listing information last updated on April 2nd, 2025 at 2:32pm MDT