

\$379,900 - 58 1816 Rutherford Road, Edmonton

MLS® #E4423119

\$379,900

3 Bedroom, 2.50 Bathroom, 1,550 sqft
Condo / Townhouse on 0.00 Acres

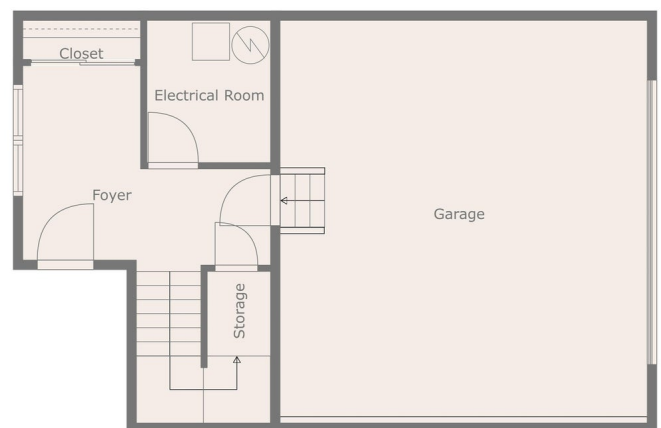
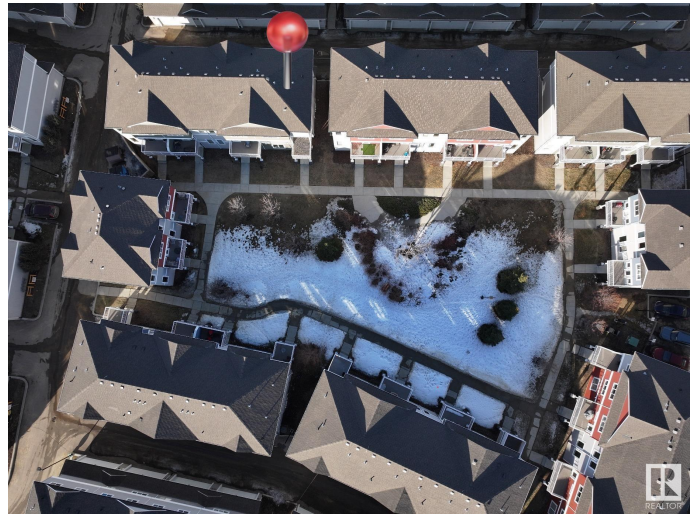
Rutherford (Edmonton), Edmonton, AB

Investor and First-Time Home Buyer ALERT in Rutherford! Welcome to this 1550 sqft, 3 bedroom 2.5 bathroom two-story townhouse with DOUBLE-ATTACHED garage and MAIN FLOOR DEN. This SOUTHWEST PARK-FACING home invites comfort, and exudes classic elegance. Enjoy gatherings in the generously-sized living and dining areas with huge windows Upper level offers 3 bright spacious sized bedrooms with 3 piece master en-suite and large walk-in closet. Conveniently located near South Common Shopping Center, walking paths, parks, schools, public transit, and Anthony Henday.

Built in 2014

Essential Information

MLS® #	E4423119
Price	\$379,900
Bedrooms	3
Bathrooms	2.50
Full Baths	2
Half Baths	1
Square Footage	1,550
Acres	0.00
Year Built	2014
Type	Condo / Townhouse
Sub-Type	Townhouse



Measurements Are Deemed Highly Accurate, But Not Guaranteed.

Style 3 Storey
Status Active

Community Information

Address 58 1816 Rutherford Road
Area Edmonton
Subdivision Rutherford (Edmonton)
City Edmonton
County ALBERTA
Province AB
Postal Code T6W 2K6

Amenities

Amenities No Animal Home, No Smoking Home, Patio
Parking Double Garage Attached

Interior

Interior Features ensuite bathroom
Appliances Dishwasher-Built-In, Garage Control, Garage Opener, Hood Fan, Refrigerator, Stacked Washer/Dryer, Stove-Electric, Window Coverings
Heating Forced Air-1, Natural Gas
Stories 3
Has Basement Yes
Basement None, No Basement

Exterior

Exterior Wood, Asphalt, Stone, Vinyl
Exterior Features Playground Nearby, Public Transportation, Schools, Shopping Nearby
Roof Asphalt Shingles
Construction Wood, Asphalt, Stone, Vinyl
Foundation Concrete Perimeter

School Information

Elementary Johnny Bright School
Middle Johnny Bright School
High Dr. Anne Anderson School

Additional Information

Date Listed February 27th, 2025
Days on Market 15

Zoning	Zone 55
Condo Fee	\$241

DATA IS DEEMED RELIABLE BUT IS NOT GUARANTEED ACCURATE BY THE REALTORS® ASSOCIATION OF EDMONTON. COPYRIGHT 2025 BY THE REALTORS® ASSOCIATION OF EDMONTON. ALL RIGHTS RESERVED. Trademarks are owned or controlled by the Canadian Real Estate Association (CREA) and identify real estate professionals who are members of CREA (REALTOR®, REALTORS®) and/or the quality of services they provide (MLS®, Multiple Listing Service®)

Listing information last updated on March 14th, 2025 at 10:47am MDT