

\$219,900 - 248 Surrey Gardens Gardens, Edmonton

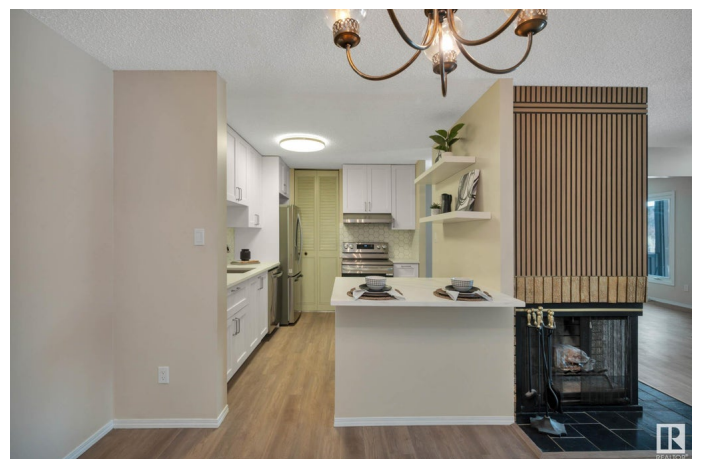
MLS® #E4428517

\$219,900

3 Bedroom, 1.00 Bathroom, 1,050 sqft
Condo / Townhouse on 0.00 Acres

Lymburn, Edmonton, AB

STUDIO-LIKE feel with this AWESOME main-level carriage bungalow condo unit @ Surrey Gardens. Amazing opportunity for 1st time buyers & investors. Tremendous location w/easy access to Hwy 2 & Anthony Henday PLUS a hop away from transit, parks, library, YMCA, schools, shopping & entertainment. Features 2 bdrms, PLUS den (great work/study space OR convert to 3rd bdrm), 4 pc bath, in-suite laundry & loads of charm. HANDSOMELY RENOVATED with focus on KITCHEN|BATH (new appliances, quartz countertops throughout, cabinetry w/chrome finishings, backsplash, trim, baseboards, vanity, toilet, tile, some lighting). Foyer off front porch & landscaped courtyard, greets you to open concept living/dining area w/corner wood fireplace & plenty of space to live comfortably. Private owner's suite is complimented by large WIC w/NEW built-in shelving & access to NEWLY RENO'D BATHROOM. Well-maintained complex & reasonable condo fees. Assigned parking stall 140, visitor parking & exterior storage/utility room. MOVE IN READY, MUST SEE!



Built in 1977

Essential Information

| | |
|--------|-----------|
| MLS® # | E4428517 |
| Price | \$219,900 |

| | |
|----------------|-------------------|
| Bedrooms | 3 |
| Bathrooms | 1.00 |
| Full Baths | 1 |
| Square Footage | 1,050 |
| Acres | 0.00 |
| Year Built | 1977 |
| Type | Condo / Townhouse |
| Sub-Type | Carriage |
| Style | Bungalow |
| Status | Active |

Community Information

| | |
|-------------|----------------------------|
| Address | 248 Surrey Gardens Gardens |
| Area | Edmonton |
| Subdivision | Lymburn |
| City | Edmonton |
| County | ALBERTA |
| Province | AB |
| Postal Code | T5T 1Z3 |

Amenities

| | |
|-----------|--|
| Amenities | Detectors Smoke, Front Porch, Parking-Visitor, See Remarks |
| Parking | Stall |

Interior

| | |
|--------------|--|
| Appliances | Dishwasher-Built-In, Dryer, Hood Fan, Refrigerator, Stove-Electric, Washer |
| Heating | Forced Air-1, Natural Gas |
| Fireplace | Yes |
| Fireplaces | Corner, Glass Door, See Remarks |
| Stories | 1 |
| Has Basement | Yes |
| Basement | None, No Basement |

Exterior

| | |
|-------------------|---|
| Exterior | Wood, Stucco |
| Exterior Features | Fenced, Flat Site, Golf Nearby, Landscaped, Low Maintenance Landscape, Picnic Area, Playground Nearby, Public Swimming Pool, Public Transportation, Schools, Shopping Nearby, See Remarks |

| | |
|--------------|--------------------|
| Roof | Asphalt Shingles |
| Construction | Wood, Stucco |
| Foundation | Concrete Perimeter |

School Information

| | |
|------------|---------------------------|
| Elementary | LYMBURN SCHOOL K-6 |
| Middle | PARKVIEW SCHOOL 7-9 |
| High | JASPER PLACE SCHOOL 10-12 |

Additional Information

| | |
|----------------|-----------------|
| Date Listed | April 2nd, 2025 |
| Days on Market | 2 |
| Zoning | Zone 20 |
| Condo Fee | \$529 |

DATA IS DEEMED RELIABLE BUT IS NOT GUARANTEED ACCURATE BY THE REALTORS® ASSOCIATION OF EDMONTON. COPYRIGHT 2025 BY THE REALTORS® ASSOCIATION OF EDMONTON. ALL RIGHTS RESERVED. Trademarks are owned or controlled by the Canadian Real Estate Association (CREA) and identify real estate professionals who are members of CREA (REALTOR®, REALTORS®) and/or the quality of services they provide (MLS®, Multiple Listing Service®)

Listing information last updated on April 3rd, 2025 at 11:47pm MDT