

\$460,000 - 1633 Enright Way, Edmonton

MLS® #E4431360

\$460,000

3 Bedroom, 2.50 Bathroom, 1,725 sqft

Single Family on 0.00 Acres

Edgemont (Edmonton), Edmonton, AB

Welcome to the beautiful and family-friendly community of Edgemont! This well-maintained 3 bedroom, 2.5 bathroom half duplex offers a bright and inviting open-concept layout that's perfect for both everyday living and entertaining. The main floor features a modern kitchen with stainless steel appliances, a spacious walk-in pantry, and a functional island that opens up to the dining area and cozy living room with a built-in electric fireplace—perfect for relaxing evenings. Just down the hall, you'll find a convenient half bathroom and access to the double attached garage. Upstairs offers even more space with a generous primary suite complete with a walk-in closet and private ensuite, two additional guest bedrooms, a 4-piece main bathroom, a family room, and a laundry room for added convenience. The full unfinished basement is a blank canvas ready for your personal touch. Enjoy backing onto a quiet greenspace with no neighbors, and close to all other essential amenities.

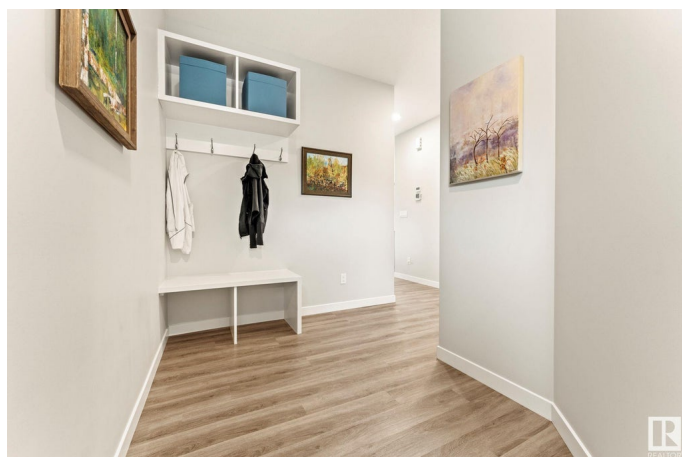
Built in 2020

Essential Information

MLS® # E4431360

Price \$460,000

Bedrooms 3



Bathrooms	2.50
Full Baths	2
Half Baths	1
Square Footage	1,725
Acres	0.00
Year Built	2020
Type	Single Family
Sub-Type	Half Duplex
Style	2 Storey
Status	Active

Community Information

Address	1633 Enright Way
Area	Edmonton
Subdivision	Edgemont (Edmonton)
City	Edmonton
County	ALBERTA
Province	AB
Postal Code	T6M 0Z3

Amenities

Amenities	Off Street Parking, On Street Parking, Deck, Detectors Smoke, Vinyl Windows
Parking	Double Garage Attached

Interior

Interior Features	ensuite bathroom
Appliances	Dishwasher-Built-In, Dryer, Garage Control, Garage Opener, Microwave Hood Fan, Refrigerator, Stove-Electric, Washer, Window Coverings
Heating	Forced Air-1, Natural Gas
Stories	2
Has Basement	Yes
Basement	Full, Unfinished

Exterior

Exterior	Wood, Vinyl
Exterior Features	Fenced, Landscaped, Level Land, No Back Lane, Park/Reserve, Playground Nearby, Public Transportation, Schools, Shopping Nearby
Roof	Asphalt Shingles

Construction	Wood, Vinyl
Foundation	Concrete Perimeter

Additional Information

Date Listed	April 17th, 2025
Days on Market	3
Zoning	Zone 57

DATA IS DEEMED RELIABLE BUT IS NOT GUARANTEED ACCURATE BY THE REALTORS® ASSOCIATION OF EDMONTON. COPYRIGHT 2025 BY THE REALTORS® ASSOCIATION OF EDMONTON. ALL RIGHTS RESERVED.Trademarks are owned or controlled by the Canadian Real Estate Association (CREA) and identify real estate professionals who are members of CREA (REALTOR®, REALTORS®) and/or the quality of services they provide (MLS®, Multiple Listing Service®)

Listing information last updated on April 20th, 2025 at 6:47pm MDT