

\$269,900 - 405 273 Charlotte Way, Sherwood Park

MLS® #E4434739

\$269,900

2 Bedroom, 2.00 Bathroom, 1,051 sqft

Condo / Townhouse on 0.00 Acres

Lakeland Ridge, Sherwood Park, AB

Welcome to this bright and sunny top-floor corner unit, where natural light pours in through expansive windows, creating a warm and inviting space. Enjoy stunning views from the large private deck—perfect for morning coffee or evening relaxation. The open floor plan features a spacious living area ideal for entertaining or unwinding. The master bedroom has walk through closet to full ensuite for added privacy. The second bedroom has good sized closet and large window. The versatile den has 2 windows, plenty of space for guests, a home office, or hobbies. A walk-in pantry and in-suite laundry add convenience, and there's ample storage throughout. This home includes two titled parking stalls for ultimate flexibility. Located in a well-maintained, centrally located building close to shops, restaurants, and transit, this unit combines comfort, style, and practicality in one fantastic package. Don't miss the opportunity to live in one of the best spots in the building!

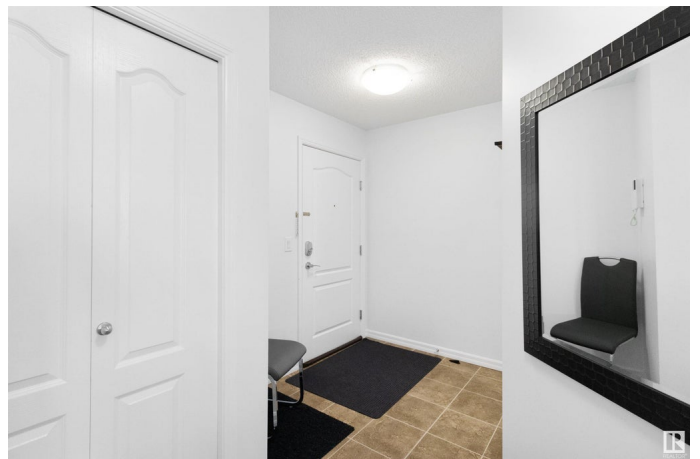
Built in 2011

Essential Information

MLS® # E4434739

Price \$269,900

Bedrooms 2



Bathrooms	2.00
Full Baths	2
Square Footage	1,051
Acres	0.00
Year Built	2011
Type	Condo / Townhouse
Sub-Type	Lowrise Apartment
Style	Single Level Apartment
Status	Active

Community Information

Address	405 273 Charlotte Way
Area	Sherwood Park
Subdivision	Lakeland Ridge
City	Sherwood Park
County	ALBERTA
Province	AB
Postal Code	T8H 0N9

Amenities

Amenities	No Animal Home, No Smoking Home, Storage-In-Suite
Parking	2 Outdoor Stalls

Interior

Interior Features	ensuite bathroom
Appliances	Dishwasher-Built-In, Dryer, Refrigerator, Stove-Electric, Washer, Window Coverings
Heating	Hot Water, Natural Gas
# of Stories	4
Stories	4
Has Basement	Yes
Basement	None, No Basement

Exterior

Exterior	Wood, Stone, Vinyl
Exterior Features	Cul-De-Sac, Landscaped, Playground Nearby, Schools, Shopping Nearby
Roof	Asphalt Shingles
Construction	Wood, Stone, Vinyl

Foundation Concrete Perimeter

Additional Information

Date Listed May 6th, 2025
Days on Market 34
Zoning Zone 25
Condo Fee \$549

DATA IS DEEMED RELIABLE BUT IS NOT GUARANTEED ACCURATE BY THE REALTORS® ASSOCIATION OF EDMONTON. COPYRIGHT 2025 BY THE REALTORS® ASSOCIATION OF EDMONTON. ALL RIGHTS RESERVED.Trademarks are owned or controlled by the Canadian Real Estate Association (CREA) and identify real estate professionals who are members of CREA (REALTOR®, REALTORS®) and/or the quality of services they provide (MLS®, Multiple Listing Service®)
Listing information last updated on June 9th, 2025 at 4:47pm MDT