

## \$250,000 - 11492 139 Avenue, Edmonton

MLS® #E4435557

**\$250,000**

3 Bedroom, 1.50 Bathroom, 1,024 sqft

Condo / Townhouse on 0.00 Acres

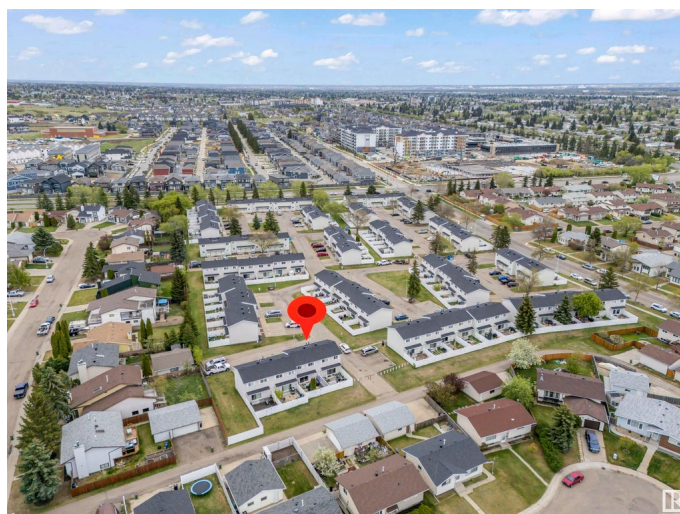
Carlisle, Edmonton, AB

Carlisle Townhouse, perfect for first-time buyers or investors, this spacious unit offers a finished basement, cozy kitchen, open-concept living/dining area, and a private fenced patio. The main floor includes a 2-piece bath and a bright kitchen with ample storage and counter space. Upstairs features 3 generous bedrooms, including a primary with his & hers closets, plus a 4-piece bath. The basement boasts a large family room and laundry area. Close to transit and shopping. A great opportunity to own or invest!

Built in 1977

### Essential Information

MLS® #	E4435557
Price	\$250,000
Bedrooms	3
Bathrooms	1.50
Full Baths	1
Half Baths	1
Square Footage	1,024
Acres	0.00
Year Built	1977
Type	Condo / Townhouse
Sub-Type	Townhouse
Style	2 Storey
Status	Active



## Community Information

Address	11492 139 Avenue
Area	Edmonton
Subdivision	Carlisle
City	Edmonton
County	ALBERTA
Province	AB
Postal Code	T5X 3L4

## Amenities

Amenities	Parking-Plug-Ins, Parking-Visitor
Parking	Stall

## Interior

Appliances	Dryer, Hood Fan, Refrigerator, Washer, Window Coverings
Heating	Forced Air-1, Natural Gas
Stories	2
Has Basement	Yes
Basement	Full, Finished

## Exterior

Exterior	Wood, Vinyl
Exterior Features	Fenced, Public Transportation, Schools, Shopping Nearby
Roof	Asphalt Shingles
Construction	Wood, Vinyl
Foundation	Concrete Perimeter

## Additional Information

Date Listed	May 9th, 2025
Days on Market	1
Zoning	Zone 27
Condo Fee	\$406

DATA IS DEEMED RELIABLE BUT IS NOT GUARANTEED ACCURATE BY THE REALTORS® ASSOCIATION OF EDMONTON. COPYRIGHT 2025 BY THE REALTORS® ASSOCIATION OF EDMONTON. ALL RIGHTS RESERVED.Trademarks are owned or controlled by the Canadian Real Estate Association (CREA) and identify real estate professionals who are members of CREA (REALTOR®, REALTORS®) and/or the quality of services they provide (MLS®, Multiple Listing Service®)

Listing information last updated on May 9th, 2025 at 11:32pm MDT