

# \$1,999,900 - 32 Windermere Drive, Edmonton

MLS® #E4437450

**\$1,999,900**

0 Bedroom, 0.00 Bathroom,  
Single Family on 0.00 Acres

Windermere, Edmonton, AB

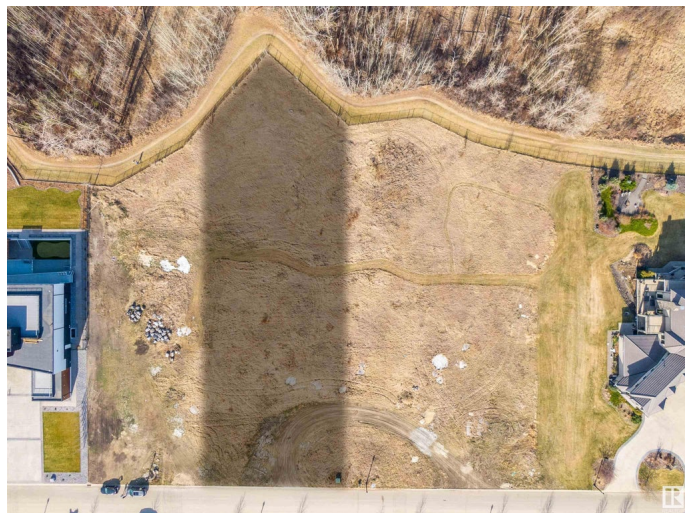
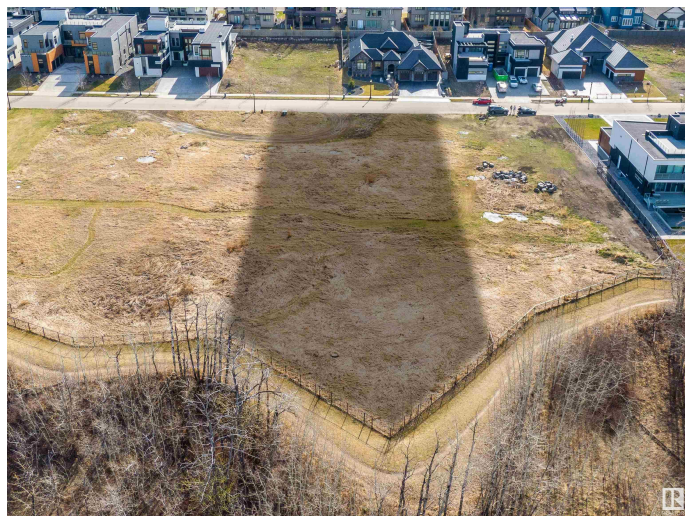
Welcome to the highly coveted area of Windermere Ridge! This spectacular lot boasts breathtaking views of the North Saskatchewan River, and River Ridge Golf & Country Club. This impressive parcel of land is 0.7 acres and provides you the opportunity to build with the builder of your choice. In addition to the spectacular unobstructed views, 32 Windermere Drive is near schools, commercial amenities, 3 golf courses and plenty of walking trails to keep you busy all year long. This is the perfect opportunity to build your custom dream home on one of the few remaining river lots on Windermere Drive!

## Essential Information

|           |                 |
|-----------|-----------------|
| MLS® #    | E4437450        |
| Price     | \$1,999,900     |
| Bathrooms | 0.00            |
| Acres     | 0.00            |
| Type      | Single Family   |
| Sub-Type  | Vacant Lot/Land |
| Status    | Active          |

## Community Information

|             |                     |
|-------------|---------------------|
| Address     | 32 Windermere Drive |
| Area        | Edmonton            |
| Subdivision | Windermere          |



|             |          |
|-------------|----------|
| City        | Edmonton |
| County      | ALBERTA  |
| Province    | AB       |
| Postal Code | T6W 0S2  |

### Exterior

|                   |  |
|-------------------|--|
| Exterior Features | Environmental Reserve, Flat Site, Golf Nearby, No Back Lane, Not Fenced, Playground Nearby, Ravine View, River Valley View, Schools, Shopping Nearby |
|-------------------|--|

### Additional Information

|                |                |
|----------------|----------------|
| Date Listed    | May 20th, 2025 |
| Days on Market | 100            |
| Zoning         | Zone 56        |

DATA IS DEEMED RELIABLE BUT IS NOT GUARANTEED ACCURATE BY THE REALTORS® ASSOCIATION OF EDMONTON. COPYRIGHT 2025 BY THE REALTORS® ASSOCIATION OF EDMONTON. ALL RIGHTS RESERVED. Trademarks are owned or controlled by the Canadian Real Estate Association (CREA) and identify real estate professionals who are members of CREA (REALTOR®, REALTORS®) and/or the quality of services they provide (MLS®, Multiple Listing Service®)

Listing information last updated on August 28th, 2025 at 3:32am MDT