

Courtesy Of Ke Wang Of MaxWell Polaris

\$232,900 - 2205 7343 South Terwillegar Drive, Edmonton

MLS® #E4438807

\$232,900

2 Bedroom, 2.00 Bathroom, 891 sqft
Condo / Townhouse on 0.00 Acres

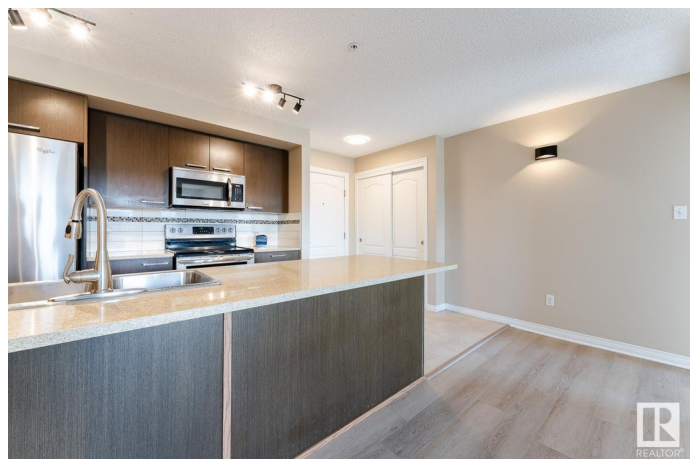
South Terwillegar, Edmonton, AB

Welcome to your new home in the desirable community of South Terwillegar! FULLY RENOVATED WITH TWO-TITLED PARKINGS. This stunning TWO-bedroom unit offers the perfect combination of peace and convenience, with quick access to shopping centers. Step inside and feel the warmth of natural sunlight. The master bedroom features large window, a walk-through closet, and an en-suite bath that offers the ultimate in luxury and relaxation. The unit also comes with a spacious living room and dining room with Vinyl Flooring. No need to worry about parking with the underground and heated parking spot during the winter months and with an additional titled parking. Don't miss out on this exceptional opportunity to own a beautiful and convenient home in the heart of South Terwillegar!

Built in 2011

Essential Information

MLS® #	E4438807
Price	\$232,900
Bedrooms	2
Bathrooms	2.00
Full Baths	2
Square Footage	891
Acres	0.00



Year Built	2011
Type	Condo / Townhouse
Sub-Type	Lowrise Apartment
Style	Single Level Apartment
Status	Active

Community Information

Address	2205 7343 South Terwillegar Drive
Area	Edmonton
Subdivision	South Terwillegar
City	Edmonton
County	ALBERTA
Province	AB
Postal Code	T6R 0M2

Amenities

Amenities	No Animal Home, No Smoking Home, Patio
Parking	Heated, Underground

Interior

Interior Features	ensuite bathroom
Appliances	Dishwasher-Built-In, Dryer, Microwave Hood Fan, Refrigerator, Stove-Electric, Washer
Heating	Baseboard, Natural Gas
# of Stories	4
Stories	4
Has Basement	Yes
Basement	None, No Basement

Exterior

Exterior	Wood, Asphalt, Stone, Vinyl
Exterior Features	Golf Nearby, Playground Nearby, Public Transportation, Schools, Shopping Nearby, See Remarks
Roof	Asphalt Shingles
Construction	Wood, Asphalt, Stone, Vinyl
Foundation	Concrete Perimeter

School Information

Elementary	Esther Starkman School
------------	------------------------

Middle	Esther Starkman School
High	Lillian Osborne School

Additional Information

Date Listed	May 27th, 2025
Days on Market	40
Zoning	Zone 14
Condo Fee	\$485

DATA IS DEEMED RELIABLE BUT IS NOT GUARANTEED ACCURATE BY THE REALTORS® ASSOCIATION OF EDMONTON. COPYRIGHT 2025 BY THE REALTORS® ASSOCIATION OF EDMONTON. ALL RIGHTS RESERVED. Trademarks are owned or controlled by the Canadian Real Estate Association (CREA) and identify real estate professionals who are members of CREA (REALTOR®, REALTORS®) and/or the quality of services they provide (MLS®, Multiple Listing Service®)

Listing information last updated on July 6th, 2025 at 1:17am MDT